

ROAD BARRIERS EVA



EVA.5

- 24 Vdc electromechanical barrier for intensive use. The barrier can be easily switched over to the other side.
- Easy and fast programming of the control panel thanks to its being positioned on the top of the road barrier
- Extremely easy use and programming of the road barrier
 - Possibility of integrated FTC.S photocells thanks to the innovative hide-away system that enables them to be perfectly integrated with the look, ensuring maximum functionality
 - Possibility of battery back up system
 - Amperometric anticrushing control

EVA.7

- 24 Vdc electromechanical road barrier for intensive use
- Easy and fast programming of the control panel thanks to its being positioned on the top of the road barrier
 - Automatic obstacle detection in compliance with European regulations
- Possibility of integrated FTC.S photocells thanks to the innovative hide-away system that enables them to be perfectly integrated with the look, ensuring maximum functionality

EVA5: Equipped with foundation plate

EVA7: Foundation plate and 2 standard 480 mm springs included



EVA



Built in flashing light.
EVA.LAMP flashing light
circuit required



Easy to use external
unlock device



Easily accessible
control panel

NOTES:

.....

.....

.....

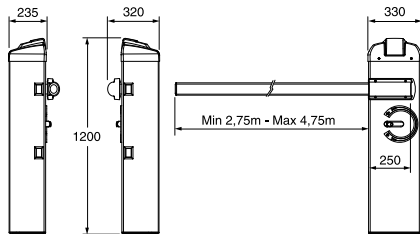
.....

.....

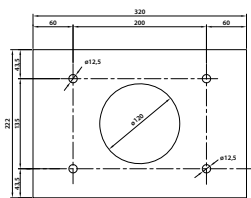
.....



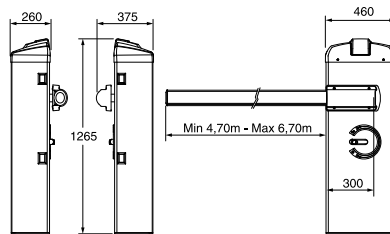
EVA.5



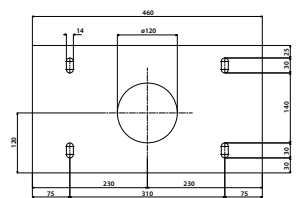
VE.PS



EVA.7



VE.P650

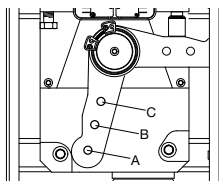


ACCESSORIES FOR USE

	BAR LENGTH (M)				
	3	3,5	4	4,5	5
EVA5.A	C	C	B	B	A
EVA5.A + VE.RAST	C	B	B	A	A
EVA5.A + VE.AM	C	C	B	B	A
EVA5.A + VE.RAST + VE.AM	C	B	B	A	A
EVA5.A + SC.RES	C	B	B	A	A
EVA5.A + SC.RES + VE.AM	C	B	B	A	A

Key: **EVA5.A**: Shank with rubber and upper profile / **VE.RAST**: Aluminium skirt / **VE.AM**: Mobile support for bar / **SC.RES**: Sensitive resistive edge (complying with annex 4 of the Machines Directive).

Attention: The installation of the VE.RAST interferes with the use of the SC.RES and vice versa. The installation of the EVA.L lights kit does not influence the balancing of the bar.



WITHOUT ACCESSORIES

BAR LENGTH (M)	TYPE OF SPRING	APPROX TENSIONING OF THE SPRING (MM)	
		EVA.KM	STANDARD SPRING
5	Standard spring	---	35
5,5	Standard spring	---	90
6	EVA.KM + Standard spring	31	15
6,5	N° 2 Standard springS	---	5 / 5
7	N° 2 Standard springS	---	35 / 35

WITH ACCESSORIES: CAP, EVA.L, SC.RES/VE.RAST, VE.AM

BAR LENGTH (M)	TYPE OF SPRING	APPROX TENSIONING OF THE SPRING (MM)	
		EVA.KM	STANDARD SPRING
5	Standard spring	---	100
5,5	EVA.KM + Standard spring	52	138
6	N° 2 Standard springS	---	20 / 20
6,5	N° 2 Standard springS	---	65 / 65
7	---	---	---

TECHNICAL DATA

	EVA.5	EVA.7
Power supply	230 Vac	230 Vac
Motor supply	24 Vdc	24 Vdc
Max. Absorbed current	1,6 A	1,6 A
Torque	205 Nm	285 Nm
Opening speed	2,5"	5"-7"
Operation cycle	intensive use	intensive use
Protection level	IP 44	IP 44
Operating Temp.	-20°C/+50°C	-20°C/+50°C
Weight	55 Kg	105 Kg
Items no. per pallet	9	6

Re-Seller: SIN CHEW ALARM PTE LTD



10 Upper Aljunied Link #06-02/03/04
Singapore 367904
Tel: (65) 62872788 Fax: (65) 62870856
Email: enquiry@sinchewalarm.com
http://www.sinchewalarm.com