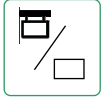


Features :



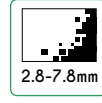
Creative



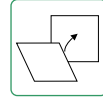
1500-5000
nits



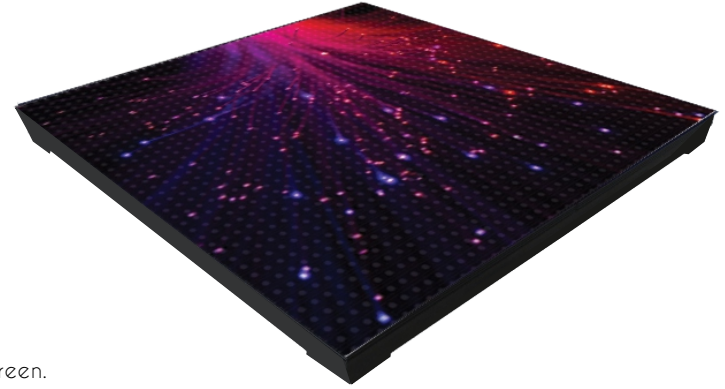
3840 Hz



Pixel/Dot Pitch
2.8-7.8mm

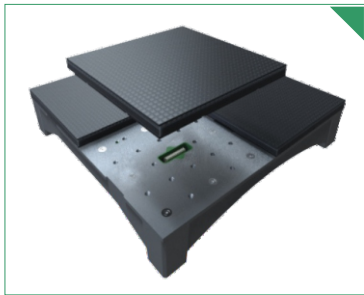


Front/Rear
Access

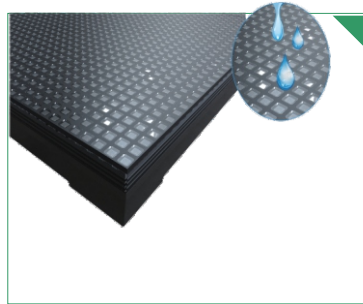


LED-PF

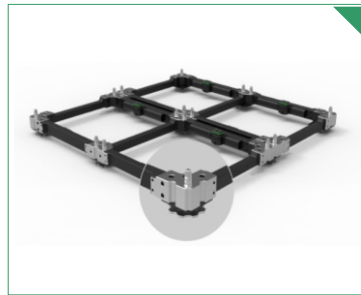
LED-Platform or LED-PF Series is specially designed for frames in different sizes for super fast, easy leveling and alignment. Integrated power and data connections result in fast and tidy cabling of the screen. The panels have integrated motion sensors that allow your to build interactive content that will respond to people's movement on the screen. The LED modules and has high contrast, anti-reflective and anti slip surface which results to a perfect view in any angle. LED-PF features a full IP65 design and is able to carry up to 2500kg/m² with three times safety factor, allowing to drive SUV's onto the floor with absolute peace of mind.



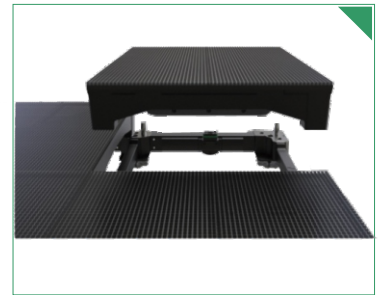
Magnetic LED modules for easy dismantle incase of an LED failure



Matte anti-slip and anti-reflective surface. Uniform and wide angle view.



Build easy and fast with multiple size floor frames.



Assemble cabinets hassle free by placing and aligning it on the frames.

Specifications

| LED-Platform | LED-PF-P2.8 | LED-PF-P3.9 | LED-PF-P5.9 | LED-PF-P7.8 |
|-------------------------------------|-------------------------------|------------------------------|------------------------------|------------------------------|
| Pixel/Dot Pitch | 2.8mm | 3.9mm | 5.9mm | 7.8mm |
| Refresh Rate | 3840 Hz | 3840 Hz | 3840 Hz | 3840 Hz |
| Brightness | 1500-4500 nits | 2000~4500 nits | 1500-3000 nits | 2000-5000 nits |
| Physical Density | 123,904 pixels/m ² | 65,536 pixels/m ² | 28,224 pixels/m ² | 16,384 pixels/m ² |
| Resolution Module (Width x Height) | 88 x 88mm | 64 x 64mm | 42 x 42mm | 32 x 32mm |
| Resolution Cabinet (Width x Height) | 176 x 176 pixels | 128 x 168 pixels | 84 x 84 pixels | 64 x 64 pixels |
| Contrast Ratio | 3000:1 | 3000:1 | 3000:1 | 3000:1 |
| Viewing Angle | 160/160° | 160/160° | 160/160° | 160/160° |
| Input Option | DVI, HDMI, SDI, VGA | DVI, HDMI, SDI, VGA | DVI, HDMI, SDI, VGA | DVI, HDMI, SDI, VGA |
| Dimension Module (Width x Height) | 250 x 250mm | 250 x 250mm | 250 x 250mm | 250 x 250mm |
| Dimension Cabinet (W x H x Depth) | 500 x 500 x 85mm | 500 x 500 x 85mm | 500 x 500 x 85mm | 500 x 500 x 85mm |
| Weight | 16kg | 16kg | 16kg | 16kg |
| Power Usage Average | 300W | 300W | 300W | 300W |
| Power Usage Maximum | 100W | 100W | 100W | 100W |
| Operating Temperature | -10°C~+45°C | -10°C~+45°C | -10°C~+45°C | -10°C~+45°C |
| Input Voltage | 100-240V AC 50-60Hz | 100-240V AC 50-60Hz | 100-240V AC 50-60Hz | 100-240V AC 50-60Hz |
| Waterproof Rating | IP65 | IP65 | IP65 | IP65 |

* Pictures are for illustration purposes, actual items will vary without notice