

Installation Guide (PLT-418C)

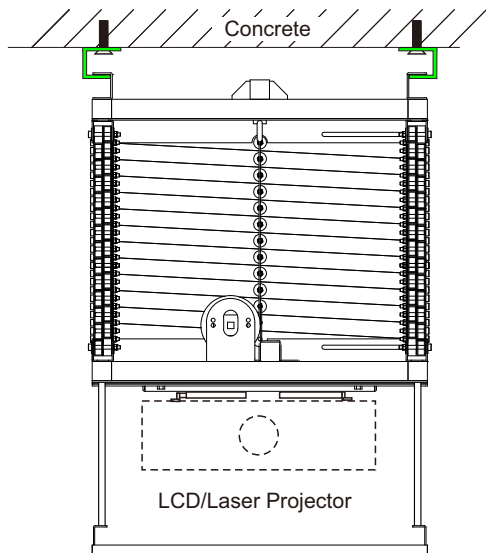
PLT

Important Notice: Do not turn on power to the projector lift until it is completely installed on the ceiling.

Warning: Caution with main supply and live wires. Install with qualified technician or trained personnel.

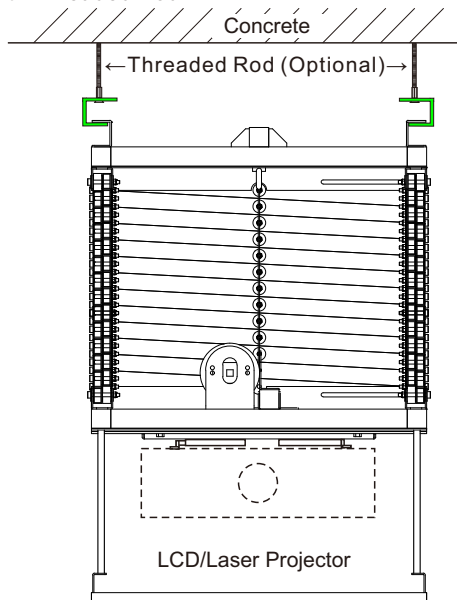
Types of Installation Mounts

Mount Directly To Concrete Ceiling

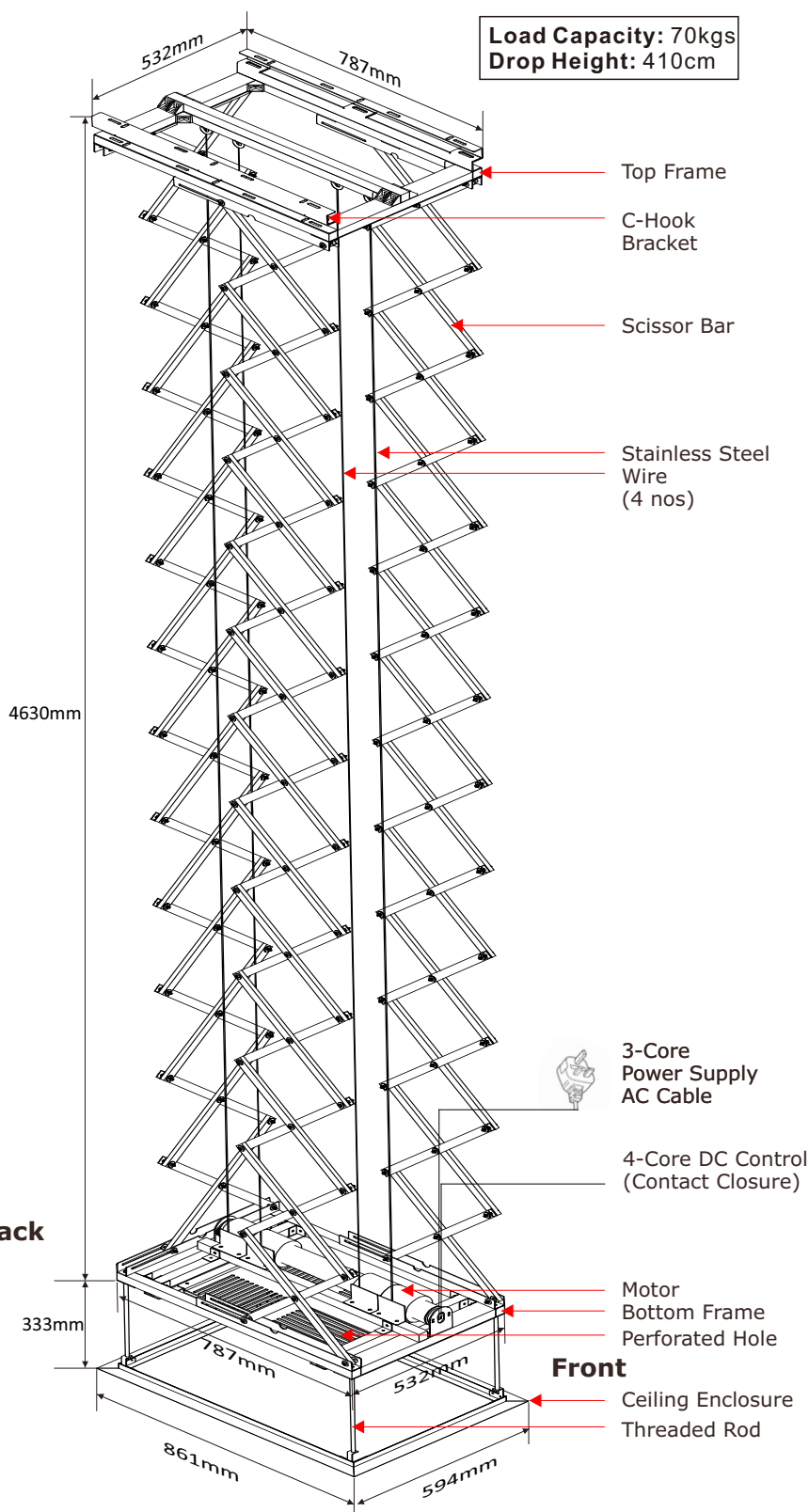


Front View

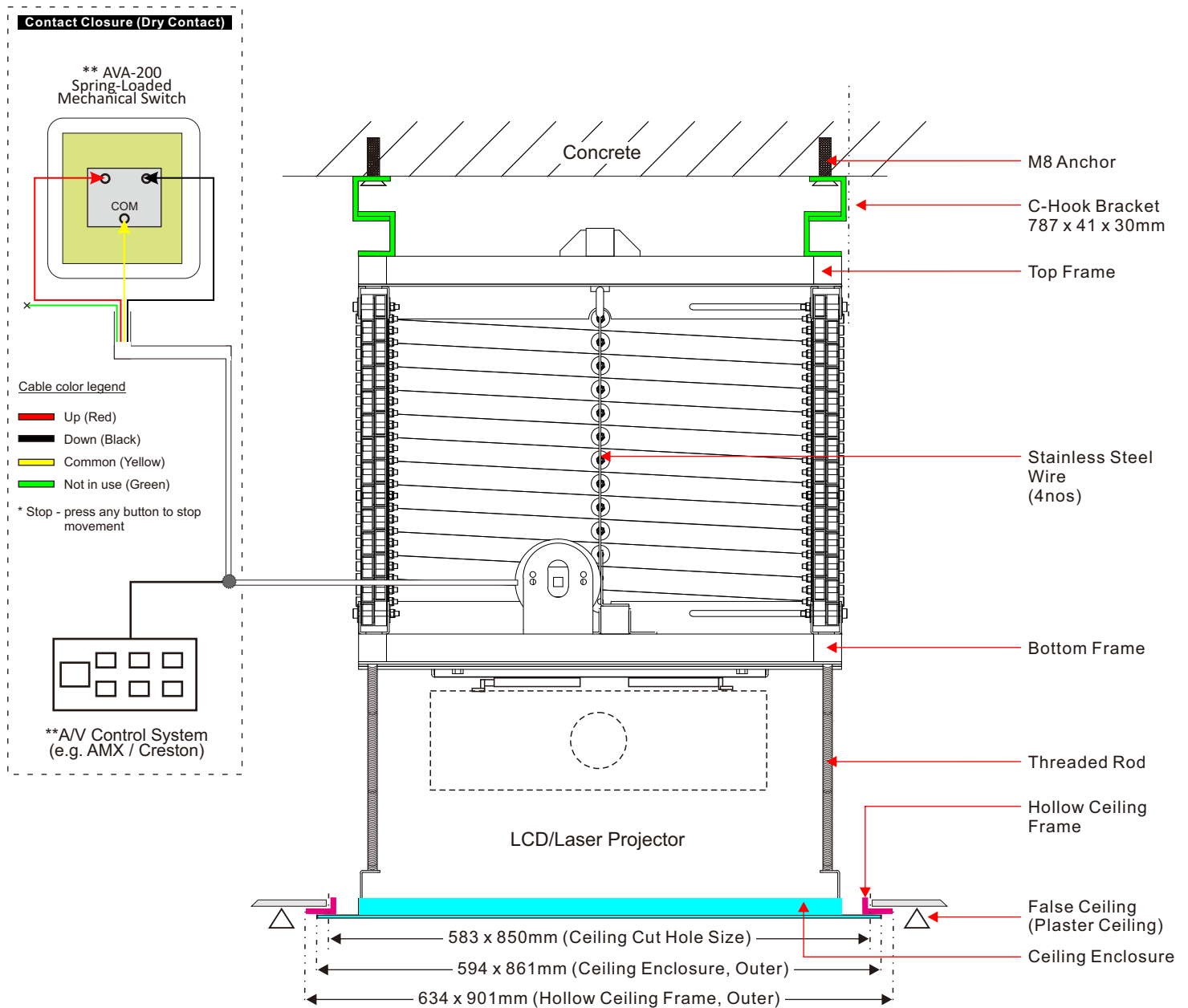
Suspended From Concrete Ceiling with Threaded Rod



Front View



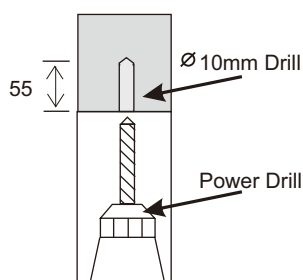
Model	Kept Position Height	Maximum Travel Distance	Load Capacity
PLT-418C	863mm	4100mm	70kg
*Depending on the lift drop height			



**** Momentary Contact closure connection (dry contact, normally open, voltage free).**
 Recommended to set close contact for 1.5sec for best working condition.
 Any voltage above 3Vdc voltage will damage this ESC
 Suitable to use with control systems (example: AMX, Crestron, Extron, ..etc)
 Warranty void if damaged is caused by inappropriate use

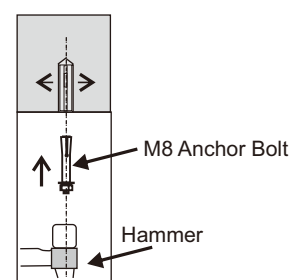
Steps for Installation

Step 1



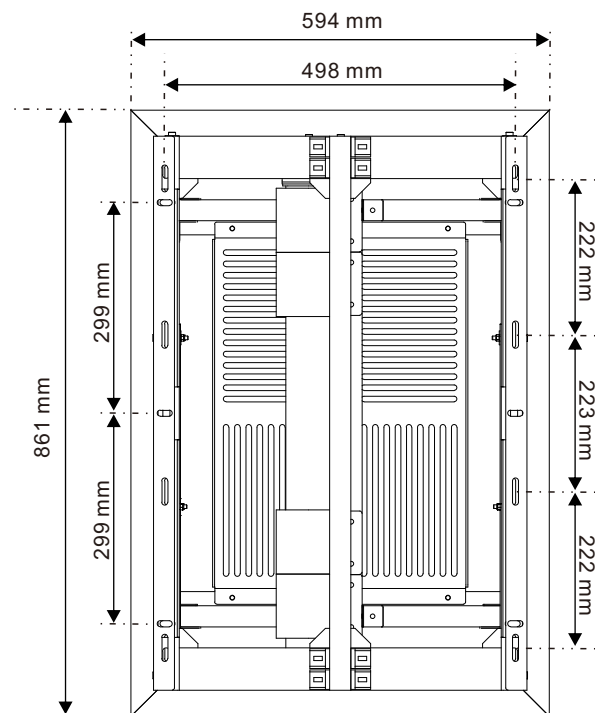
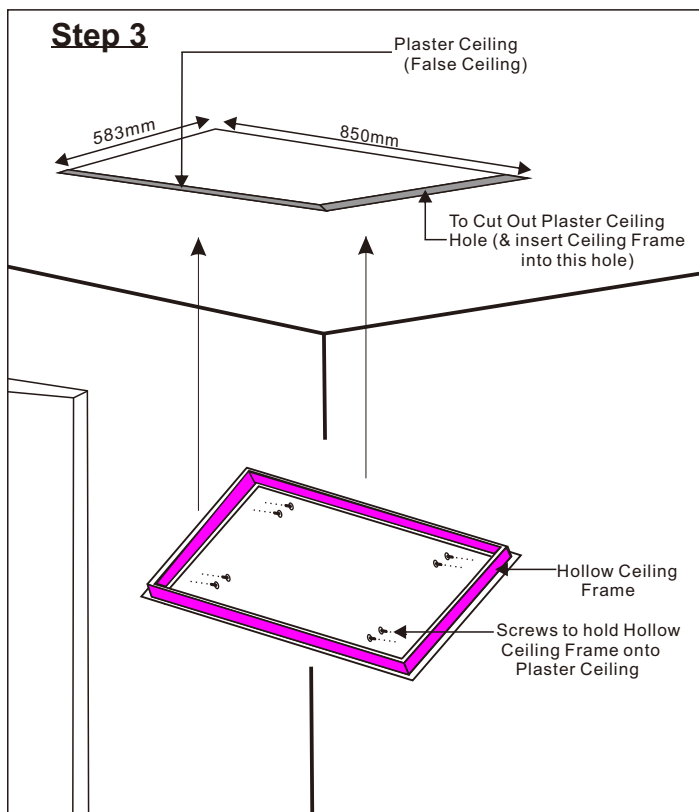
Drill Dia. 10mm holes to a depth of 55mm..
 (Note: Do not drill too deep)

Step 2



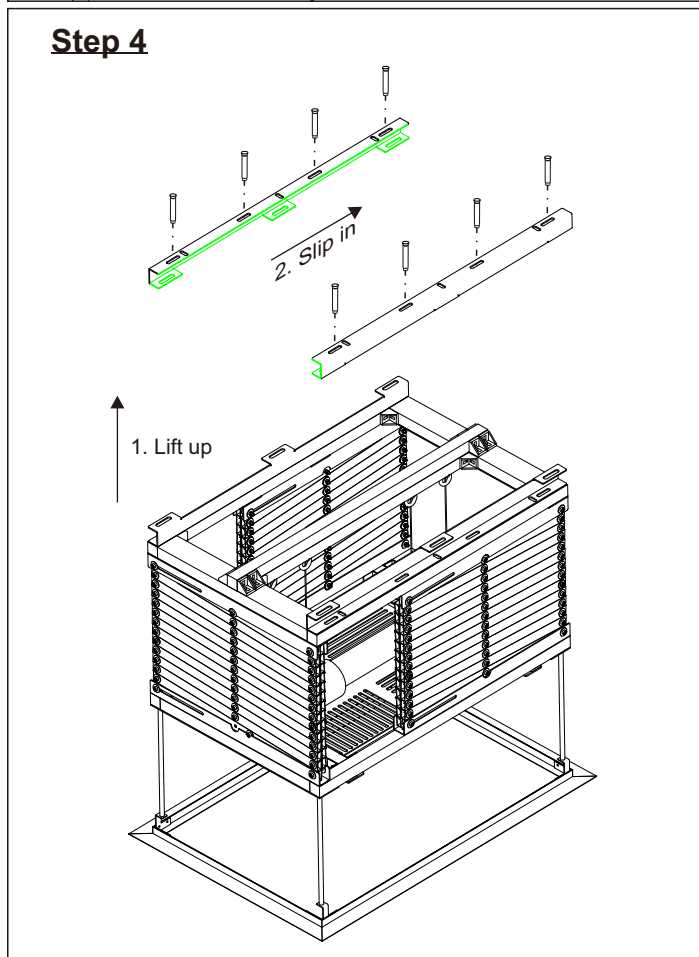
Insert M8 anchor into the hole.
 Use pin punch to expand the anchor.

Step 3

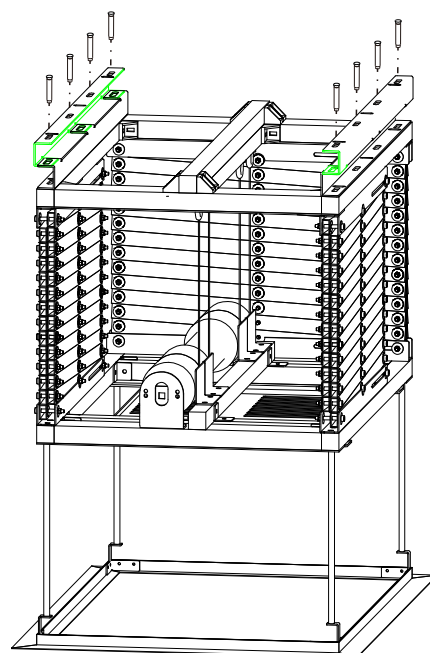


To cut out plaster ceiling hole to the size of the hollow frame so that it can be mounted securely.

Step 4



Step 5



Step 6: RF Remote Operation



Up

Move Upward



Stop

Stop Movement



Down

Move Downward



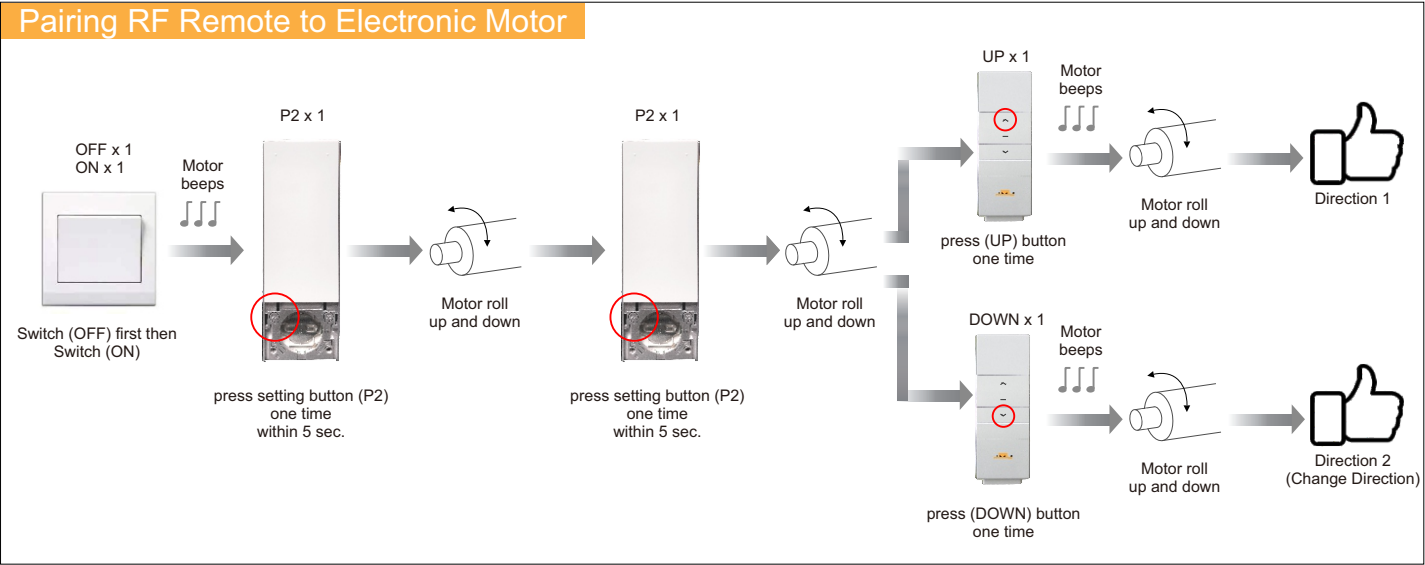
Stop for 2 sec.

Move to third limit (for maintenance purposes)
Press and hold (STOP) for 2 sec.

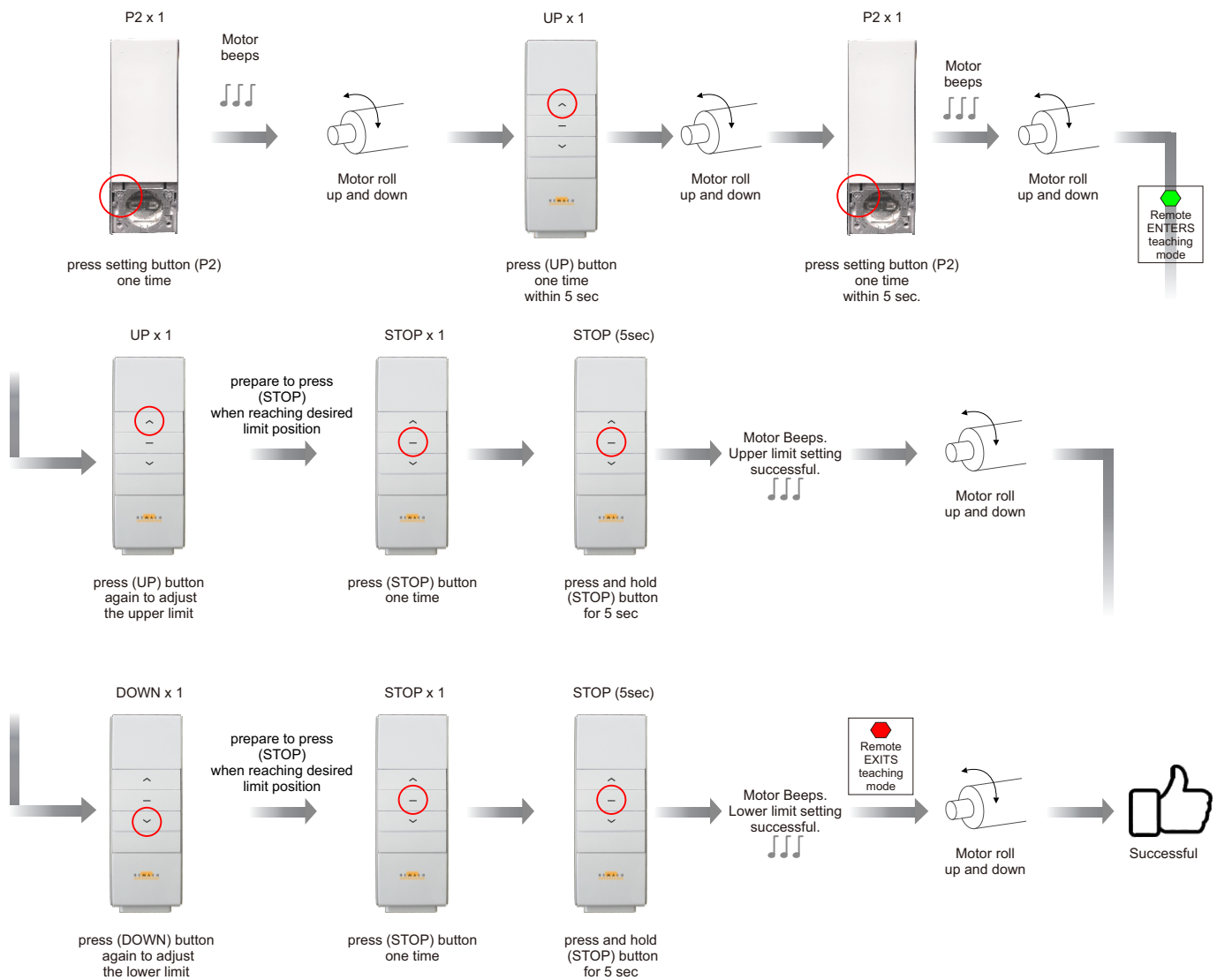
Step 7: Mechanical Switch (AVA-200, AVA-200+, Third-Party Control)



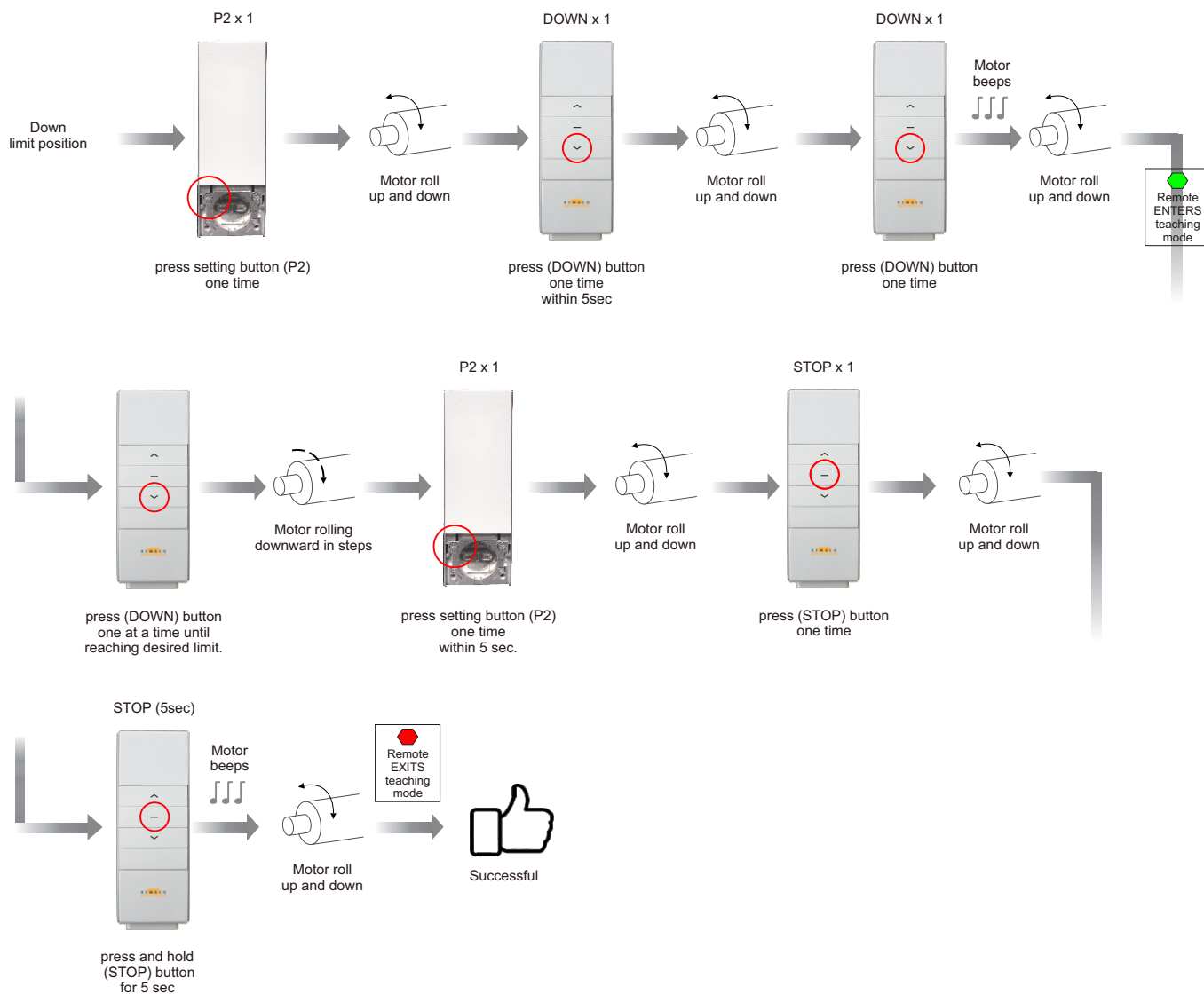
Step 8: Pairing, Limit Position Settings, and Deleting



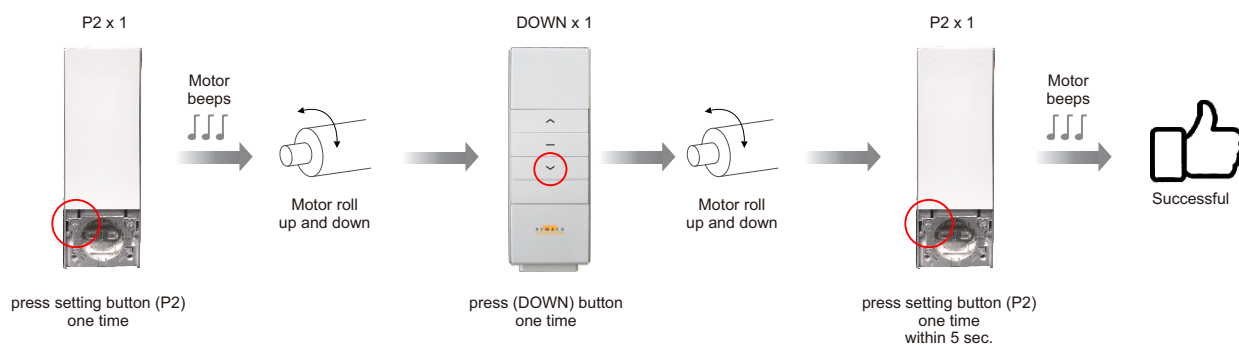
Setting of Upper and Lower Limit



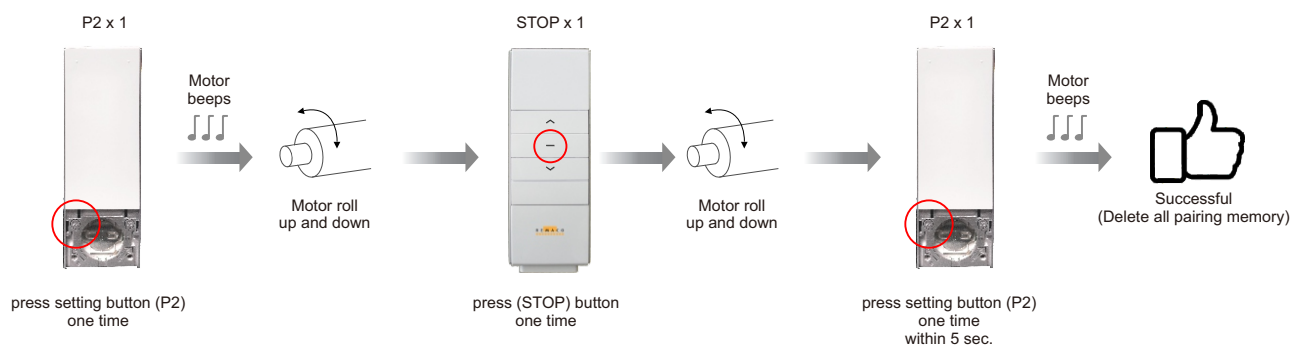
Setting of Third Limit (Below Lower Limit for Maintenance)



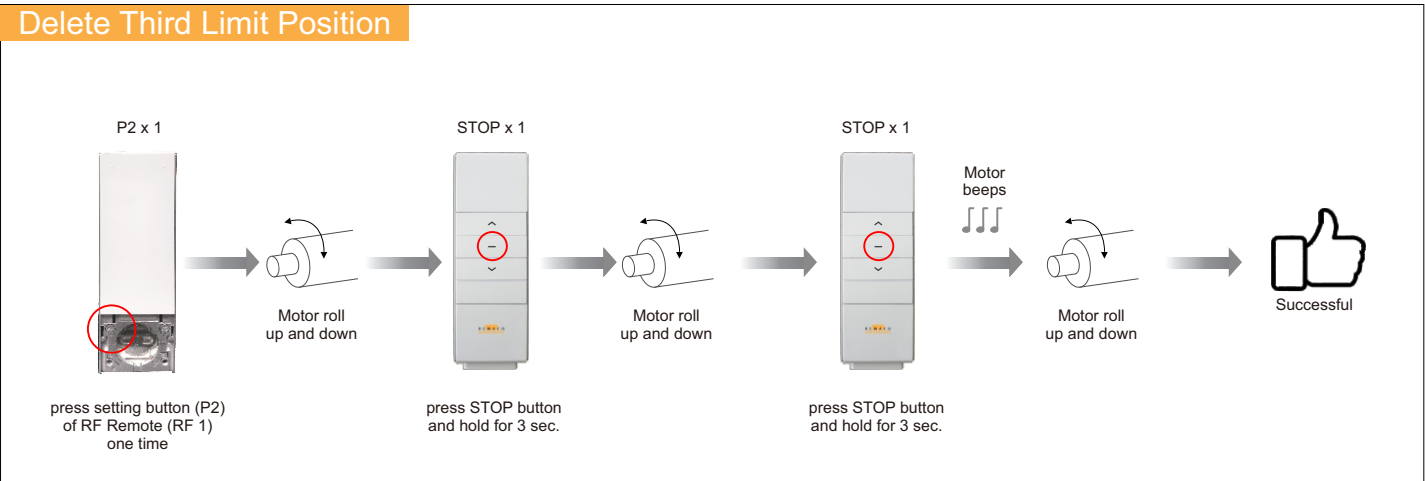
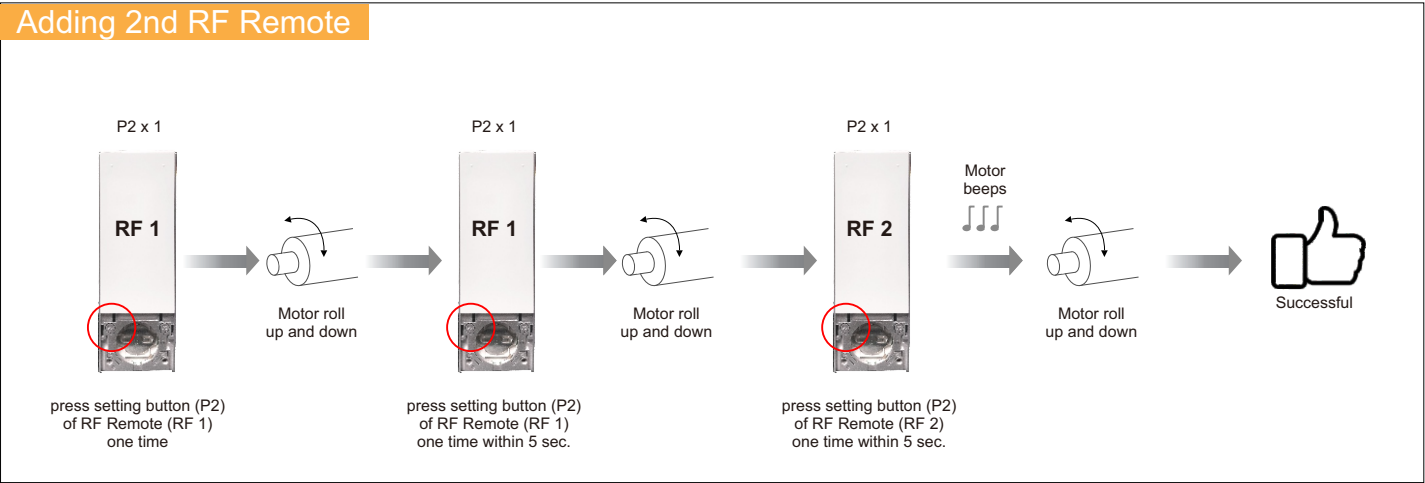
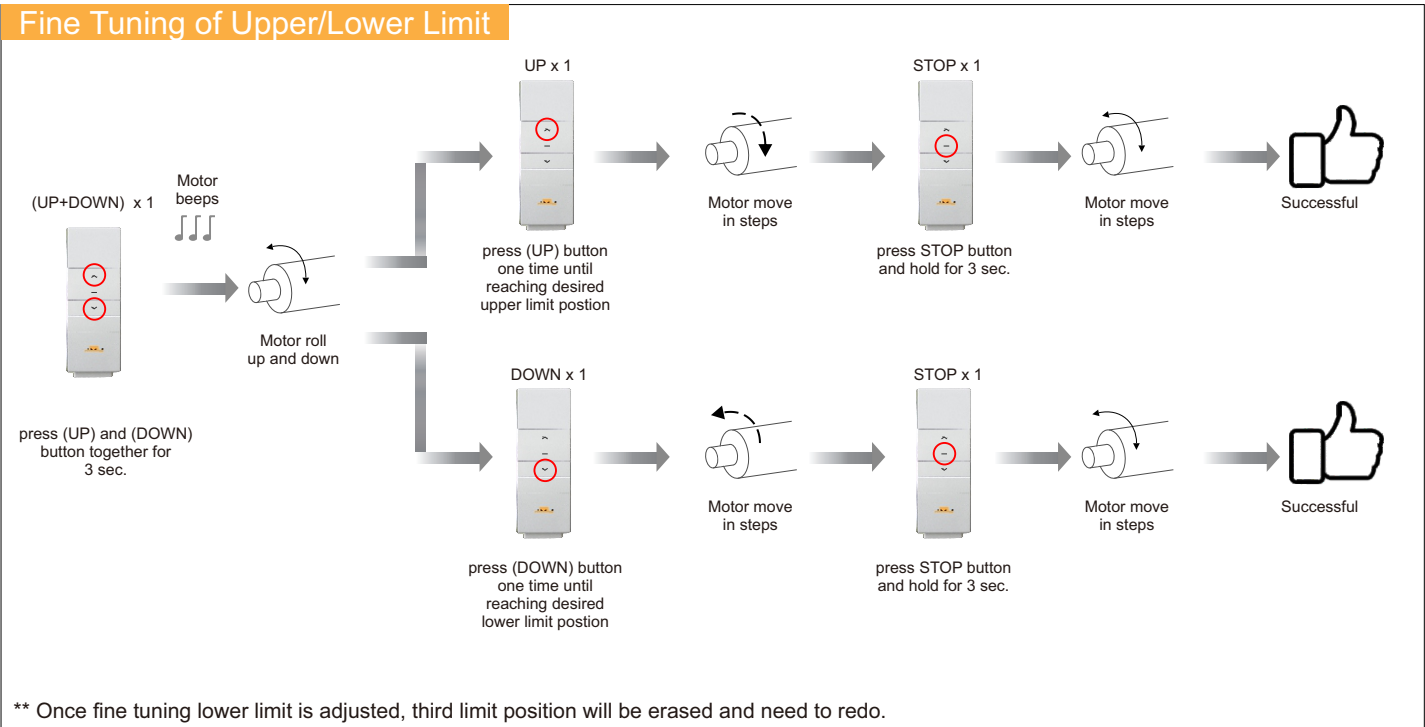
Delete the Limits



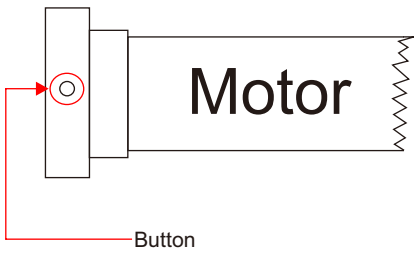
Delete Memory of RF Remote Pairing



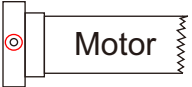
Appendix A (Set Only When Required)




Appendix B (Another Setting method by Motor Button)



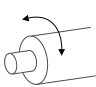
Change Direction




Press and Hold Button for 5 sec.



Motor beeps x 3

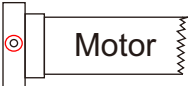


Motor roll up and down

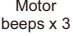


Successful

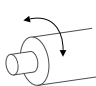
Factory Default Reset



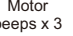
Press and Hold Button for 10 sec. (Do not release)



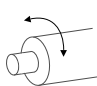
Motor beeps x 3



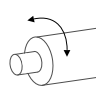
Motor roll up and down




Motor beeps x 3



Motor roll up and down



Motor roll up and down



Successful

5sec.

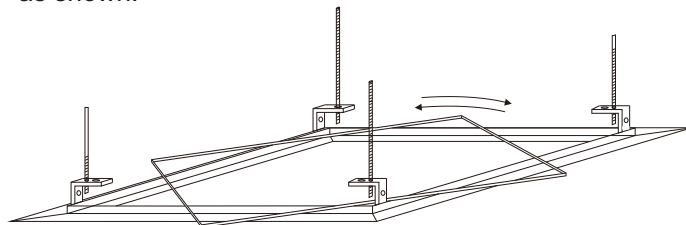
Next 5sec.

Appendix C (Assemble threaded rod and spring to ceiling enclosure)

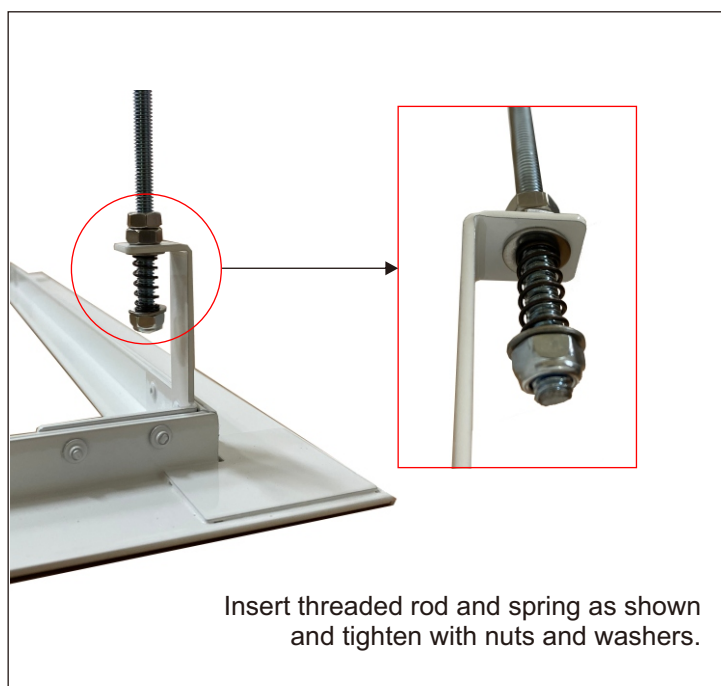
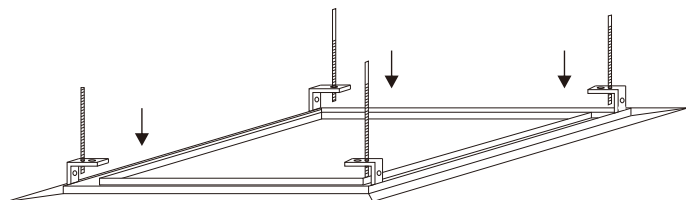


Simple Method to insert false ceiling

Lay false ceiling board 45 degree on false ceiling frame as shown.



Rotate and false ceiling board will position correctly.



End