

Operator  
Telephone  
Fax  
e-Mail

---

**Table of contents**

**Project: Greenwall illumination**

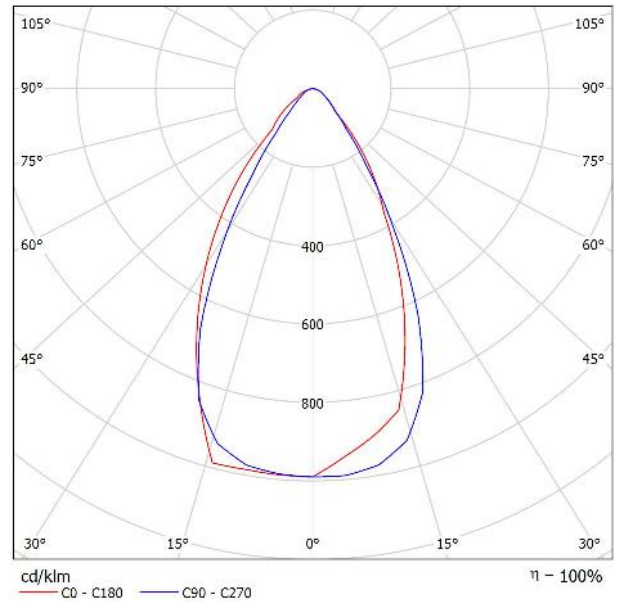
<b>Table of contents</b>	1
Luminaire type: 805090G-60W80 LED Grow Light	
Luminaire Data Sheet	2
<b>Room 1</b>	
Summary	3
Input Protocol	4
Luminaire parts list	5
Luminaires (layout plan)	6
Luminaires (coordinates list)	7
Photometric Results	8
3D Rendering	9
False Colour Rendering	10
<b>Room Surfaces</b>	
<b>Wall 3</b>	
Isolines (E)	11
Value Chart (E)	12
<b>Calculation Grid 1</b>	
Isolines (E, Perpendicular)	13
Value Chart (E, Perpendicular)	14

Operator  
Telephone  
Fax  
e-Mail

### 805090G-60W80 / Luminaire Data Sheet

See our luminaire catalog for an image of the luminaire.

Luminous emittance 1:

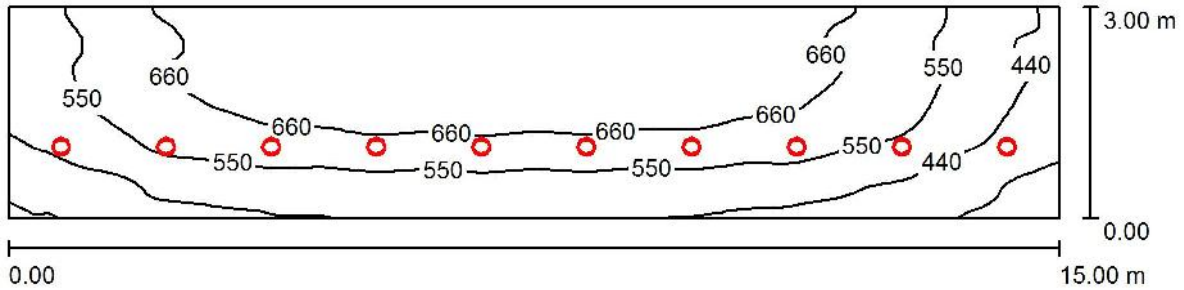


Luminaire classification according to CIE: 100  
CIE flux code: 83 95 99 100 100

Due to missing symmetry properties, no UGR table can be displayed for this luminaire.

Operator  
Telephone  
Fax  
e-Mail

**Room 1 / Summary**



Height of Room: 7.600 m, Mounting Height: 7.600 m, Maintenance factor: 0.80 Values in Lux, Scale 1:108

Surface	[%]	E <sub>av</sub> [lx]	E <sub>min</sub> [lx]	E <sub>max</sub> [lx]	u0
Workplane	/	584	268	771	0.459
Floor	20	504	241	672	0.479
Ceiling	70	166	110	1013	0.666
Walls (4)	50	332	116	1107	/

**Workplane:**

Height: 1.000 m  
Grid: 128 x 64 Points  
Boundary Zone: 0.000 m

**Luminaire Parts List**

No.	Pieces	Designation (Correction Factor)	(Luminaire) [lm]	(Lamps) [lm]	P [W]
1	10	805090G-60W80 (Type 1)* (1.000)	8258	8242	81.6
*Modified Technical Specifications			Total: 82577	Total: 82420	816.0

Specific connected load: 18.13 W/m<sup>2</sup> = 3.10 W/m<sup>2</sup>/100 lx (Ground area: 45.00 m<sup>2</sup>)

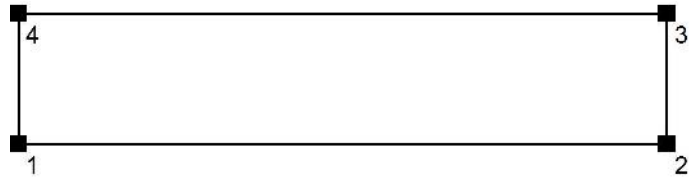
Operator  
 Telephone  
 Fax  
 e-Mail

**Room 1 / Input Protocol**

Height of working plane: 1.000 m  
 Boundary Zone: 0.000 m

Maintenance factor: 0.80

Height of Room: 7.600 m  
 Ground area: 45.00 m<sup>2</sup>



Surface	Rho [%]	from ( [m]   [m] )	towards ( [m]   [m] )	Length [m]
Floor	20	/	/	/
Ceiling	70	/	/	/
Wall 1	50	( 0.000   0.000 )	( 15.000   0.000 )	15.000
Wall 2	50	( 15.000   0.000 )	( 15.000   3.000 )	3.000
Wall 3	50	( 15.000   3.000 )	( 0.000   3.000 )	15.000
Wall 4	50	( 0.000   3.000 )	( 0.000   0.000 )	3.000

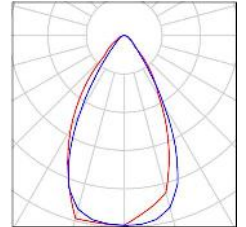
Operator  
Telephone  
Fax  
e-Mail

---

**Room 1 / Luminaire parts list**

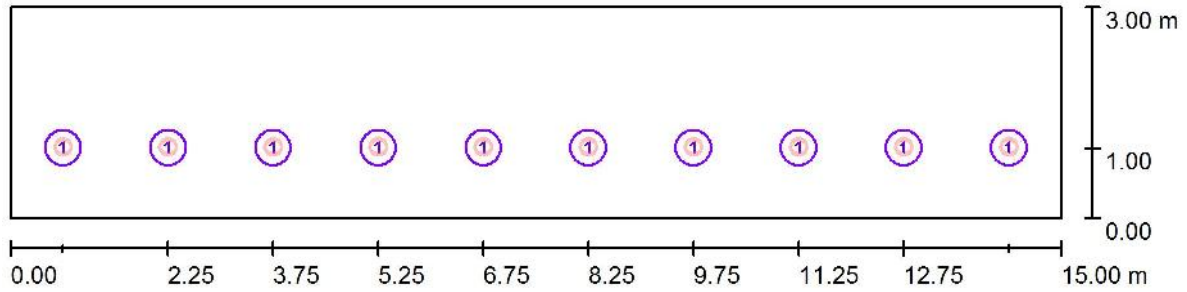
10 Pieces 805090G-60W80 (Type 1)  
Article No.:  
Luminous flux (Luminaire): 8258 lm  
Luminous flux (Lamps): 8242 lm  
Luminaire Wattage: 81.6 W  
Luminaire classification according to CIE: 100  
CIE flux code: 83 95 99 100 100  
Fitting: 1 x User defined (Correction Factor 1.000).

See our luminaire  
catalog for an image of  
the luminaire.



Operator  
Telephone  
Fax  
e-Mail

**Room 1/Luminaires(layout plan)**



Scale 1 : 108

**Luminaire Parts List**

No.	Pieces	Designation
1	10	805090G-60W80 (Type 1)*

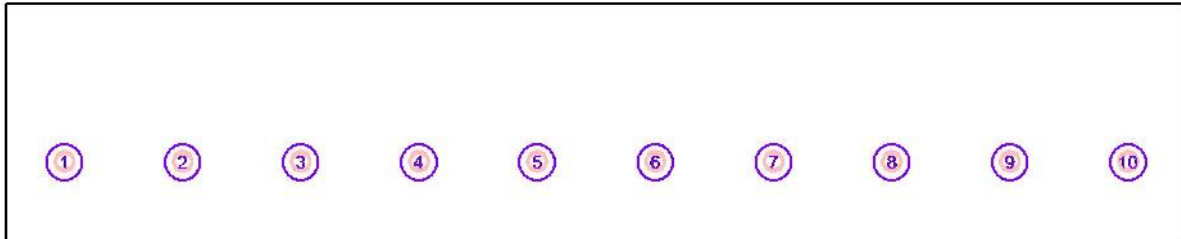
\*Modified Technical Specifications

Operator  
 Telephone  
 Fax  
 e-Mail

**Room 1/Luminaires(coordinateslist)**

**805090G-60W80 (Type 1)**

8258 lm, 81.6 W, 1 x 1 x User defined (Correction Factor 1.000).



No.	Position [m]			Rotation [°]		
	X	Y	Z	X	Y	Z
1	0.750	1.000	7.600	20.0	0.0	0.0
2	2.250	1.000	7.600	20.0	0.0	0.0
3	3.750	1.000	7.600	20.0	0.0	0.0
4	5.250	1.000	7.600	20.0	0.0	0.0
5	6.750	1.000	7.600	20.0	0.0	0.0
6	8.250	1.000	7.600	20.0	0.0	0.0
7	9.750	1.000	7.600	20.0	0.0	0.0
8	11.250	1.000	7.600	20.0	0.0	0.0
9	12.750	1.000	7.600	20.0	0.0	0.0
10	14.250	1.000	7.600	20.0	0.0	0.0

Operator  
Telephone  
Fax  
e-Mail

## Room 1/PhotometricResults

Total Luminous Flux: 82577 lm  
Total Load: 816.0 W  
Maintenance factor: 0.80  
Boundary Zone: 0.000 m

Surface	Average illuminances [lx]			Reflection factor [%]	Average luminance [cd/m <sup>2</sup> ]
	direct	indirect	total		
Workplane	434	151	584	/	/
Floor	369	136	504	20	32
Ceiling	3.91	162	166	70	37
Wall 1	55	183	238	50	38
Wall 2	139	138	276	50	44
Wall 3	311	124	436	50	69
Wall 4	190	147	337	50	54

Uniformity on the working plane

u<sub>0</sub>: 0.459 (1:2)

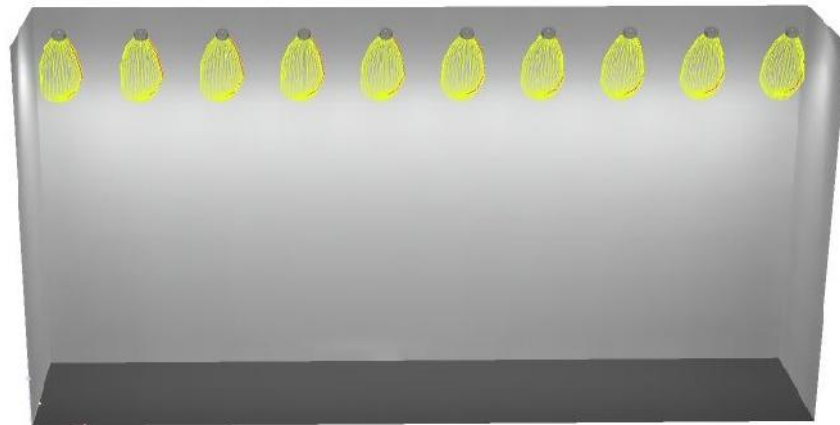
E<sub>min</sub> / E<sub>max</sub>: 0.347 (1:3)

Specific connected load: 18.13 W/m<sup>2</sup> = 3.10 W/m<sup>2</sup>/100 lx (Ground area: 45.00 m<sup>2</sup>)

Operator  
Telephone  
Fax  
e-Mail

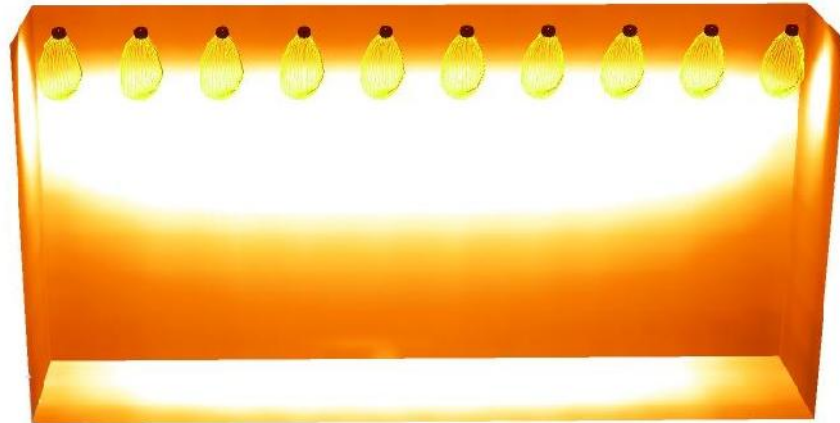
---

**Room 1/3DRendering**



Operator  
Telephone  
Fax  
e-Mail

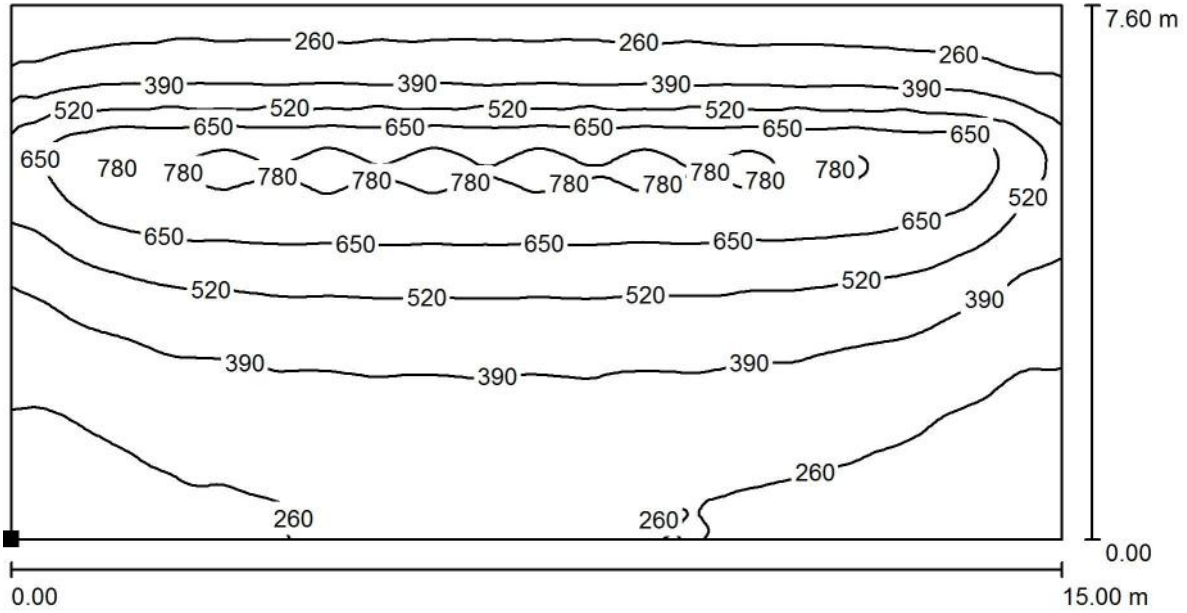
**Room 1/FalseColour Rendering**



0 50 100 200 300 350 400 450 500 lx

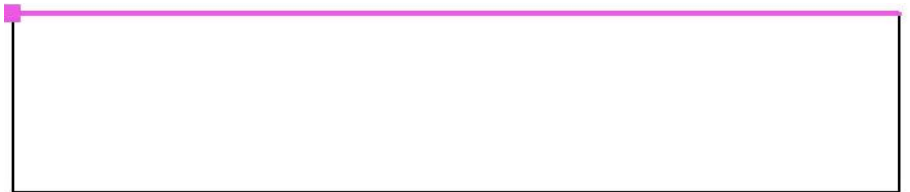
Operator  
 Telephone  
 Fax  
 e-Mail

**Room 1 / Wall 3 / Isolines (E)**



Values in Lux, Scale 1 : 108

Position of surface in room:  
 Marked point:  
 (0.000 m, 3.000 m, 0.000 m)

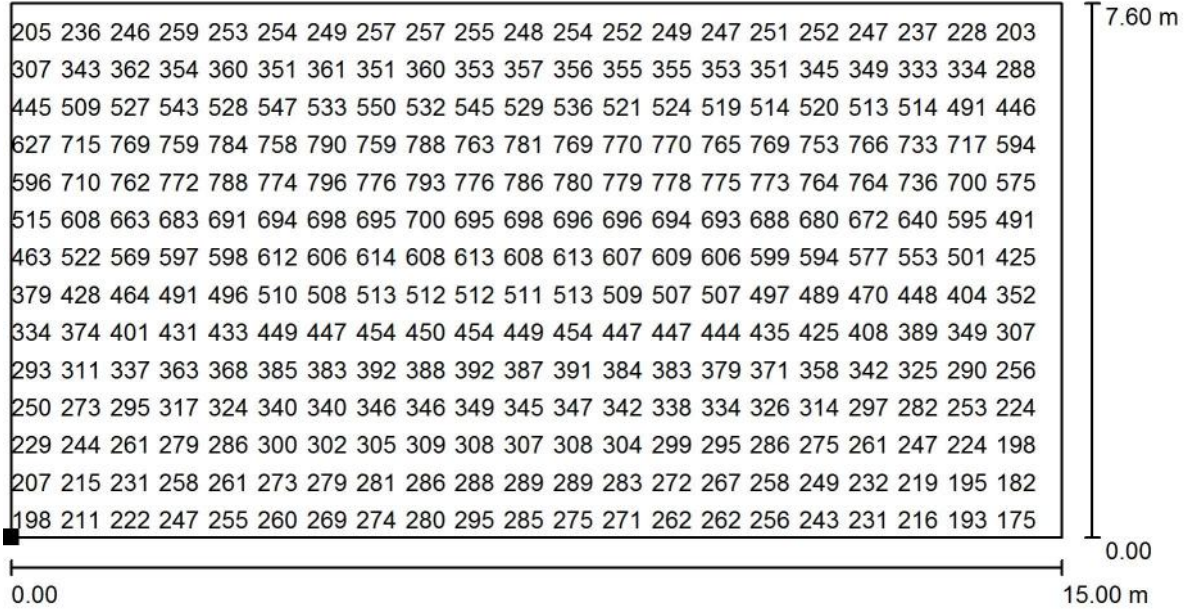


Grid: 128 x 128 Points

$E_{av}$ [lx]	$E_{min}$ [lx]	$E_{max}$ [lx]	u0	$E_{min} / E_{max}$
436	164	812	0.376	0.202

Operator  
 Telephone  
 Fax  
 e-Mail

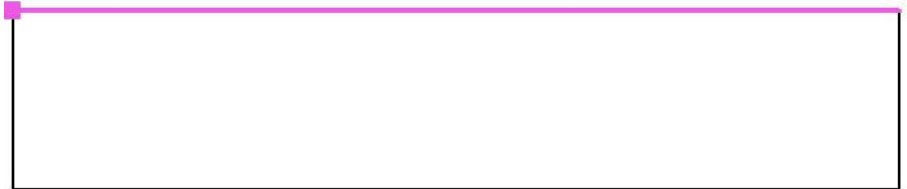
**Room 1 / Wall 3 / Value Chart (E)**



Values in Lux, Scale 1 : 108

Not all calculated values could be displayed.

Position of surface in room:  
 Marked point:  
 (0.000 m, 3.000 m, 0.000 m)

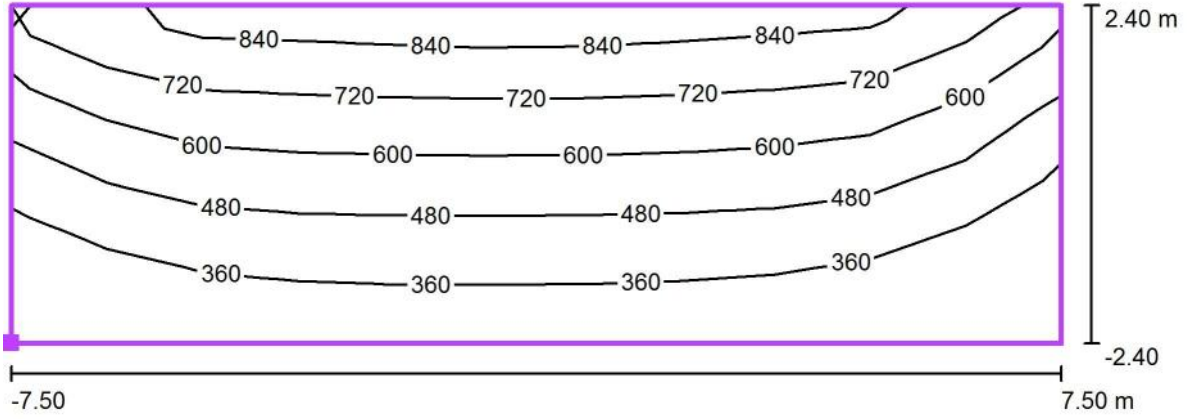


Grid: 128 x 128 Points

$E_{av}$ [lx]	$E_{min}$ [lx]	$E_{max}$ [lx]	$u0$	$E_{min} / E_{max}$
436	164	812	0.376	0.202

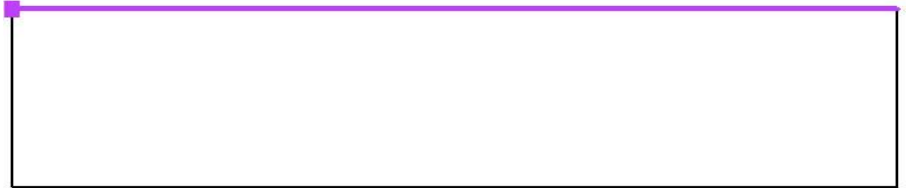
Operator  
 Telephone  
 Fax  
 e-Mail

**Room 1 / Calculation Grid 1 / Isolines (E, Perpendicular)**



Values in Lux, Scale 1 : 108

Position of surface in room:  
 Marked point: (0.000 m, 3.000 m, 1.200 m)

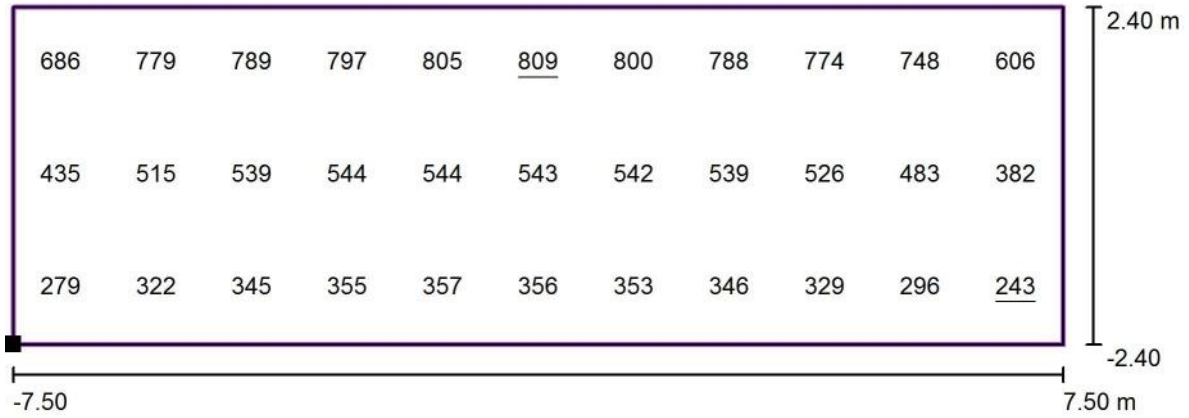


Grid: 11 x 3 Points

$E_{av}$ [lx]	$E_{min}$ [lx]	$E_{max}$ [lx]	u0	$E_{min} / E_{max}$
532	243	809	0.46	0.30

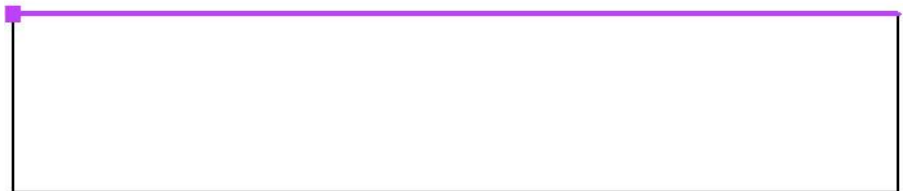
Operator  
 Telephone  
 Fax  
 e-Mail

**Room 1 / Calculation Grid 1 / Value Chart (E, Perpendicular)**



Values in Lux, Scale 1 : 108

Position of surface in room:  
 Marked point: (0.000 m, 3.000 m, 1.200 m)



Grid: 11 x 3 Points

$E_{av}$ [lx]	$E_{min}$ [lx]	$E_{max}$ [lx]	u0	$E_{min} / E_{max}$
532	243	809	0.46	0.30