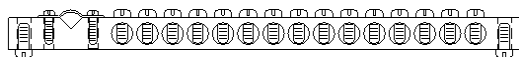


BRASS TERMINALS

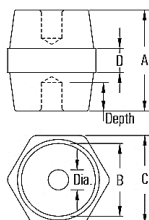


BASE SUPORT



Item	Part No.	No. of cable entry	Cross Section mm ²
1	BT 6W-35	1 Main + 6 x 35mm ² Cable Entry Holes	9 X 12
2	BT 6W-25	1 Main + 6 x 25mm ² Cable Entry Holes	9 X 12
3	BT 6W-16	1 Main + 6 x 16mm ² Cable Entry Holes	9 X 9
4	BT 4W-16	1 Main + 4 x 16mm ² Cable Entry Holes	9 X 9
5	BT 10W-16	1 Main + 10 x 16mm ² Cable Entry Holes	9 X 9
6	BT 15W-16	1 Main + 15 x 16mm ² Cable Entry Holes	9 X 9
7	BT 20W-16	1 Main + 20 x 16mm ² Cable Entry Holes	9 X 9
8	BT 25W-16	1 Main + 25 x 16mm ² Cable Entry Holes	9 X 9
9	BT 30W-16	1 Main + 30 x 16mm ² Cable Entry Holes	9 X 9
10	BT 36W-16	1 Main + 36 x 16mm ² Cable Entry Holes	9 X 9
11	BT 45W-16	1 Main + 45 x 16mm ² Cable Entry Holes	9 X 9
12	BT 1M-16	1 Meter , 16mm ² Cable Entry Holes	9 X 9
13	ASE SUPPORT		

BUS BAR NEUTRAL SUPPORT



Material : Brass, bulk moulding compound, unsaturated polymer with fiber glass
 : Good electrical resistance, heat resistance, fire resistance,
 low shrinkage and water resistance properties

Item	Description	Tensile (1bs)	Torque (ft 1bs)	Voltage (KV) Withstand	Screw	A	B	C	D
						mm			
1	H25 X 6	500	6	6.0	M6 X 8	25	24	30	10
2	H35 X 8	600	10	10	M8 X 10	35	27	33	9
3	H51 X 8	1000	20	15	M8 X 10	51	29	36	11
4	H51 X 10	1000	20	15	M10 X 10	51	29	36	11
5	H76 X 10	1500	40	25.0	M10 X 16	76	36	50	16